



GLASS WINDOW INSTALLATION GUIDE





GLASS WINDOW INSTALLATION GUIDE

Fixtech's Solution to Great Quality Glass Windows

Direct Bonding and Sealing



PST 20133
AS/NZS 4020
POTABLE WATER APPROVED



TYPE APPROVED PRODUCT
Certificate No. K-3227



APPROVAL NO.
WP0940011 HH
WP0940012 HH

Fix190 (MSP190)



GLASS WINDOW INSTALLATION GUIDE





GLASS WINDOW INSTALLATION GUIDE

Glass Window Preparation



Set up the glass windows up side down so that the inside of the glass is facing you, this is the face that will be prepared. Set up in a cool dry place away from dust. Wipe down the entire glass with a good clean industrial alcohol cleaner, Methylated Spirits, heptane, M.E.K.

GLASS WINDOW INSTALLATION GUIDE





GLASS WINDOW INSTALLATION GUIDE

Glass Window Preparation

Use white soft pencil
"Chinagraph" to mark out the
interior fit out line within the
yacht



Dry fit the glass to the boat structure
and mark out from the inside the
external line of the Glass Blackout.
Mask to the inside of the line with good
quality masking tape.

GLASS WINDOW INSTALLATION GUIDE



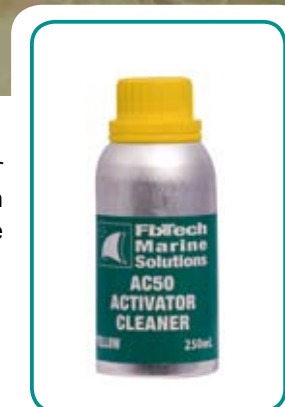


GLASS WINDOW INSTALLATION GUIDE

Glass Window Preparation



Open the Fixtech AC50 container and with a clean lint free cloth pour some AC50 into the cloth and wipe down the area to be blacked out in one direction only. Do not wipe back and forth as this does not remove any contaminants. Repeat until the glass is clean. Wait 1 minute and with a new clean cloth wipe off.



Shake the Bottle of Fixtech AC50 Glass Cleaner and Activator all in one

GLASS WINDOW INSTALLATION GUIDE





GLASS WINDOW INSTALLATION GUIDE

Glass Window Preparation



Shake the Bottle of Fixtech PR30 Glass Blackout and make sure you hear those marbles for 30 seconds, Shake again for another 60 seconds.

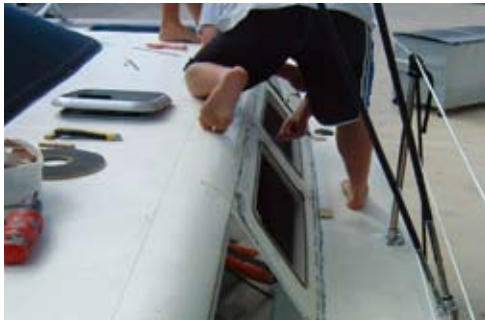
Open the Fixtech PR30 container and pour some contents into a good clean plastic PE container and then either with the Fixtech woollen wipes or a good quality paint brush, felt pad or roller suitable for solvent based paints, apply PR30 in a smooth manner onto the glass in a even motion. PR30 is slightly self levelling but will not run or streak when placed with the above methods. Apply a minimum of 2 coats to ensure glass blackout is completely covering the inside of the glass with no pin holes. Leave for min 1 hour before fitting. Inspect glass blackout for pin holes by holding to the light. If pin holes exist repeat above.





GLASS WINDOW INSTALLATION GUIDE

Glass Window Preparation



Prepare the boat substrate bonding zone. Abrade the area whether it is marine painted, gel coat, raw fibreglass, steel, aluminium or even timber. Sand the bond zone with 100 grit paper and then wipe down abraded zone with a cloth of good clean alcohol cleaner or methylated spirits. Make sure the surface is clean and dry before applying any Fix190 Adhesive Sealant.

Timber is the only surface you will need to seal with Fixtech Timber Primer PR10 black, before applying any structural adhesive sealant, ensure the primer is 100% dry before applying.





GLASS WINDOW INSTALLATION GUIDE

Glass Window Preparation



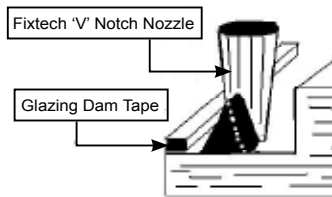
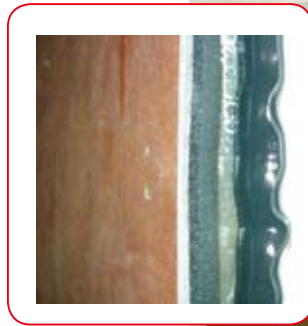
If the shipwright wishes to use a Fixtech Glazing Dam tape it will save money and time so that you do not have to do any messy internal wipes and ensures the glass is perfectly offset from the superstructure.





GLASS WINDOW INSTALLATION GUIDE

Glass Window Preparation



After Dry fitting the window glass for the last time to make sure everything is ready and in place to be bonded. If using Fixtech Glazing Tape peel off the protective layer to Glazing tape and discard. After cutting the sausage and inserting into the FG8 or FG7 manual tool fit the 'V' Notch nozzle and dispense the FixSeal+ MSP190 about 5mm behind the dam tape. Ensure the sealant height is minimum 2 x the dam tape height or 2 x your glass offset distance. (i.e. thickness of sealant)





GLASS WINDOW INSTALLATION GUIDE

Glass Window Installation



Install only when the bond zone of the Glass window is clean, dry and free of oil and grease.

Place the lower edge of the glass window onto the packers which are in position to support the window glass at the correct height, and push into position displacing the Fix190 (MSP190) adhesive sealant.

Best to use cloth gloves to ensure you keep fingers dry and no oil will contact the bond zone.

Packers can be made from PE or PP plastic is best as they will not adhere to the Fix190 (MSP190).

GLASS WINDOW INSTALLATION GUIDE





GLASS WINDOW INSTALLATION GUIDE

Glass Window Installation



The final push to the top and sides of the glass top get it bedded into the Fix190 (MSP190) which will displace outwards. If further packers are required to position the window perfectly into its final position, now is the time to apply these packers. Packers can be made from PE or PP plastic is best as they will not adhere to the Fix190 (MSP190).





Fixtech Glass Window Systems



Monte Fino by Kha Shing (Taiwan)



Monte Fino by Kha Shing (Taiwan)



Maritimo Offshore (Australia)

GLASS WINDOW INSTALLATION GUIDE

